



**GPX10-8 GENERAL PURPOSE**

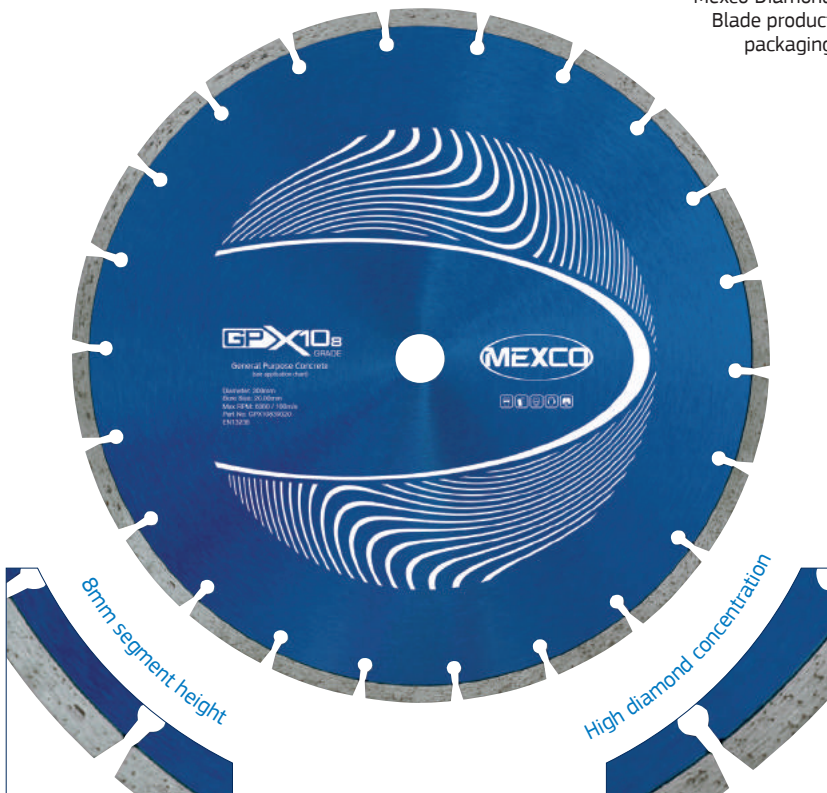
This product offers a cost effective solution for the user who requires a diamond blade that can cope with the cutting of the most widely used non-abrasive building materials.

**KEY FEATURES**

- 8mm Segment Height
- Heavy Duty Steel Centre
- Price Point Product
- Fast Cutting



Mexco Diamond Blade product packaging



**PRODUCT OVERVIEW:**

**Grade:** X10  
**Segment Height:** 8mm  
**Segment Attachment:** Sintered  
**Dry/Wet:** Wet or Dry Use  
**Recommended for:** Angle Grinder, Disc Cutter & Bench Saw  
**Segment Type:** Segmented  
**Gullet Type:** Narrow Keyhole



**EXCELLENT VALUE**

The X10 range of products has been specifically designed to offer the user excellent performance in a wide spectrum of cutting and drilling applications whilst providing the benefit of a low purchase cost.

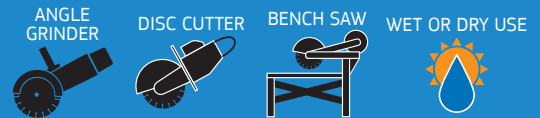


**PRODUCT DATA SHEET**

**DIAMETERS AVAILABLE:**

Code	Diameter		Segment Width	Bore Size / s
	(mm)	(in)	(mm)	(mm)
GPX10811522	115	4.5	2	22.23
GPX10812522	125	5	2	22.23
GPX10823022	230	9	2.8	22.23
GPX10830020	300	12	3.2	20

**SUITABLE FOR USE ON:**

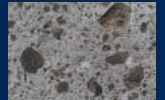


**APPLICATION:**

- Non Abrasive Indian Sandstone
- Hard Facing Brick
- Medium Facing Brick
- Hard Slate
- River Gravel Aggregate Concrete
- Flint Aggregate Concrete
- Reinforced Concrete
- Concrete Kerbs
- Concrete Slabs
- Reinforced Lintels
- Hard Limestone
- Limestone Aggregate Concrete
- Concrete Paviments
- Soft Facing Brick
- Concrete Blocks Over 15kn
- Hard Sandstone



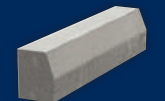
Hard Slate



Flint Aggregate Concrete



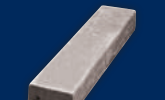
Reinforced Concrete



Concrete Kerbs



Concrete Slabs



Reinforced Lintels

- **RECOMMENDED** to cut these materials
- **Will cut these materials** with the possibility of reduced lifetime / glazing

CONFORMS TO EN13236